

Homelessness in Tucson/Pima County

Characteristics of People Accessing Homeless Services

Annual Report
July 1, 2011 to June 30, 2012

Data from the Tucson/Pima County
Homeless Management Information System (HMIS)



Table of Contents

| | |
|---|-----|
| Executive Summary | 3 |
| Introduction | 3 |
| Purpose | 3 |
| Methods and Data Limitations | 3 |
| Overview | 5 |
| Summary of Persons Accessing Services by Program Type | 8 |
| Annual Report of Clients Served | 9 |
| Demographics: Gender & Age | 10 |
| Demographics: Ethnicity, Race, Veterans, Domestic Violence Victims, and Disability of Long Duration | 11 |
| Households | 12 |
| Prior Living Situation: Residence Prior to Program Entry | 13 |
| Prior Living Situation: Stability of Prior Residence & Zip Code of Last Permanent Housing | 14 |
| Exit Destinations | 15 |
| Further Characteristics: Disabilities, Employment, & Education | 16 |
| Income and Benefits : Amounts & Sources of Income at Entry | 17 |
| Income and Benefits : Sources of Non-Cash Benefits at Entry | 18 |
| Special Report : Older Homeless Adults | 19 |
| Point-in-Time Reports | 20 |
| Demographics: Gender & Age | 21 |
| Demographics: Ethnicity, Race, Veterans, Domestic Violence Victims, and Disability of Long Duration | 22 |
| Households | 23 |
| Glossary | 24 |
| Agencies Providing Data | 266 |
| For More Information | 277 |

Executive Summary

Introduction

This report presents information about homelessness in Tucson and Pima County based on data from the Homelessness Management Information System (HMIS). HMIS is a computerized data collection tool designed to record and store client-level information on the characteristics and service needs of homeless persons. The U.S. Department of Housing and Urban Development (HUD) requires homeless service providers who receive HUD funding to use HMIS and encourages all other homeless service providers to participate in HMIS. HMIS was implemented locally by the Tucson Pima Collaboration to End Homelessness (TPCH) and Pima County beginning in October 2008. Homeless service providers in Pima County include, but are not limited to, organizations that provide emergency shelter, transitional housing, rental assistance and case management, permanent supportive housing, outreach services, employment/workforce development services, and drop-in programs that provide food, hygiene, transportation, and communication services.

Numerous organizations, such as food pantries, health care providers, faith-based organizations, and other supportive service providers, serve homeless persons without HUD funding and are thus not required to use HMIS. While TPCH encourages these organizations to utilize HMIS in order to gain a more complete picture of homelessness in Pima County, for many it is not possible due to a lack of capacity. In addition, federal law prohibits dedicated Domestic Violence shelters from using HMIS. At the time of this report, over 90% of known homeless service agencies in Tucson/Pima County participated in HMIS.

Communities throughout the U.S. use HMIS data for local planning and evaluation, and also report their data to HUD where it is compiled in the Homelessness Data Exchange and presented in an Annual Homelessness Assessment Report. For more information, please go to www.hmis.info. For more information about the Tucson Pima Collaboration to End Homelessness, please go to www.tpch.org.

Purpose

The *Homelessness in Tucson/Pima County* report is intended to provide information to community residents, service providers, journalists, government officials, neighborhood and civic leaders to improve our community's understanding of the prevalence and causes of homelessness. This HMIS report and future reports will contribute to understanding special populations, discerning trends, assessing changes in service needs, and documenting outcomes.

Methods and Data Limitations

The data contained in this report are gathered from ServicePoint, an HMIS software program designed by Bowman Systems. HUD has established a national set of HMIS Data Standards to ensure consistency of data fields across organizations. The data fields described in the standards have been incorporated into the ServicePoint software design.

Data are self-reported by individuals during program intake procedures which typically consist of interview-type questions and the completion of forms. Except where identified, data are collected from those receiving services and their dependants at program entry. Data are entered into ServicePoint by trained and licensed users at the participating homeless provider agencies.

Homelessness in Tucson/Pima County

This report is compiled through extracting data from ServicePoint, beginning 15 days following the final day of a reporting period. Reporting periods of 12 months run from January to December or July to June. Point-in-time data is also collected on the last day of the 12-month reporting period, and cover data for individuals and families currently in programs, i.e. those lacking a program exit date, in order to provide a snapshot of homeless services accessed on a single day in Pima County.

Data are considered complete and valid for reporting if 60% or more of individual fields were complete for the reporting time frame, i.e., did not have missing data. A data field that does not have 60% or more completed (“non-null”) entries is excluded from the report, except where noted.

Data are generally organized by program type, which indicates the source of the data as well as what type of service is provided. Types of services are defined as:

Emergency Shelter - Any facility whose primary purpose is to provide temporary shelter for those who are experiencing homelessness in general or for specific populations of homeless people. This can also include emergency motel/hotel voucher assistance.

Transitional Housing - A project that has its purpose facilitating the movement of homeless individuals and families to permanent housing within a reasonable amount of time (usually 24 months).

Permanent Supportive Housing - Long-term, community-based housing that has supportive services for homeless persons with disabilities.

HPRP (Homelessness Prevention and Rapid Re-Housing Program)- A Recovery Act program, HPRP is to provide homelessness prevention assistance to households who would otherwise become homeless and to provide assistance to rapidly re-house persons who are homeless.

Non-Residential Services - Represents any programming and supportive services offered to homeless participants that does not consist of housing or shelter. Examples of Non-Residential Services can include, but is not limited to, outreach, day or drop-in centers, food assistance, and employment programs.

The data contained in each program type or each reporting category are unduplicated within itself; however, because persons can participate in several programs at the same time (such as emergency shelter and non-residential services) there may be some duplication across program types. If an individual accesses a program more than once during a reporting period, the first response is reported on in efforts to capture data closest to onset of homelessness.

In data tables, “counts” represent the actual numbers of persons in each category and “percents” (%) are calculated from the total unduplicated number of individuals who access homeless services during the reporting period, unless otherwise noted. “Unknown/refused” fields are used when possible. Some providers, typically high-volume emergency shelters, do not complete all data fields.

This report provides a basic picture of the homeless and/or low income population in Pima County. This is not a complete picture of homelessness in Tucson or Pima County because the numbers provided in this report only represent individuals and families accessing services at agencies that use the Homeless Management Information System (HMIS).

This report does not include individuals who do not access services or individuals who access services at organizations not participating in HMIS. Additionally, in some ways this report illustrates the capacity of homeless services in Pima County, rather than the true need of services. This is because the data reported upon are collected largely through agencies that have a fixed number of individuals and households that services can be provided to, such as emergency shelter beds or transitional housing units. Both of these factors limit the ability of this report to comment on the true numbers of homeless persons and the need for homeless services in Pima County.

Overview

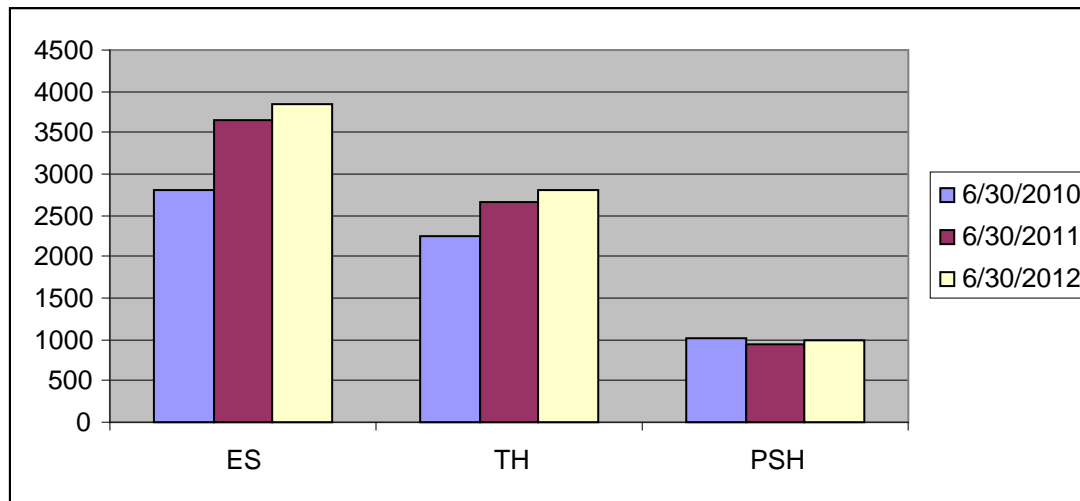
The *Homelessness in Tucson/Pima County* report presents data for two time periods: a 12-month period from July 1, 2011 through June 30, 2012, and a one-day point-in-time snapshot from June 30, 2012. Both of these sections represent homeless persons who accessed services from homeless service providers who participated in HMIS.

How Many People Accessed Homeless Services?

From July 1, 2011 through June 30, 2012, 9,917 unduplicated individuals utilized homeless services at some point during the 12-month period. Of these, 82% were adults and 18% were children under age 18. A total of 8,374 households accessed services.

Of those individuals receiving services, 6,055 unduplicated individuals received shelter in emergency shelters or transitional housing programs.

On a single day (June 30, 2012), 4,045 unduplicated individuals accessed services. Of these, 84% were adults and 16% were children under age 18. A total of 3,533 households were provided with services on this day. The following graph shows 12-month period ending points for people accessing services.



ES = Emergency Shelters TH = Transitional Housing PSH = Permanent Supportive Housing

Characteristics of Homeless Persons Who Accessed Services During the 12-month Period

Those accessing services from July 1, 2011 through June 30, 2012 were 64% male and 36% female. Emergency shelters served 77% males and 23% females.

Seventy-eight percent (78%) of those served were adults (age 18-61), 5% were older adults (62+) and 17% were children. Emergency Shelters, Permanent Supportive Housing, and Non-Residential programs primarily served adults while transitional housing served 21% children and HPRP served 45% children.

Almost one-third of those served were Hispanic/Latinos (32%). African Americans made up 12% of those accessing services, which is approximately three times higher than the proportion in the general metropolitan Tucson population. Homeless service recipients included 17% veterans, 13% victims of domestic violence, and 38% with a disability of long duration.

Of adults accessing services, forty-seven percent (47%) reported having a disability of long duration. Of these, the most common disabilities reported were mental illness and addiction disorders. Seventeen percent (17%) of adults were employed, and almost six out of ten were looking for work. More than half of adults had a high school education or GED; 21% had some college or a college degree.

Prior Living Situation

Those seeking homeless services came to programs from a variety of residence situations: 43% had been homeless, 9% were from institutional settings, and 49% had previously lived in rentals, hotels/motels, or staying with family or friends. These previous living situations varied by type of program. Almost one-third of those entering emergency shelter had come from another shelter, indicating the existence of a population of individuals who cycle through emergency shelters. Those entering transitional housing mostly came from emergency shelters (18%), other transitional housing programs (18%), or had been staying with family or friends (26%). Half of those entering permanent supportive housing had either been sleeping outside (22%) or staying in an emergency shelter (27%).

Most had experienced unstable housing prior to accessing homeless services, although this varied by program type. Seventy-two percent (72%) of those entering emergency shelter had been in their previous living situations for less than 3 months.

Exit Information

Of those leaving homeless service programs, 26% left to live in unsubsidized rentals. Of those exiting emergency shelters, 21% exited to emergency shelters and 37% exited to sleeping outside.

Income/Benefits at Entry and Exit

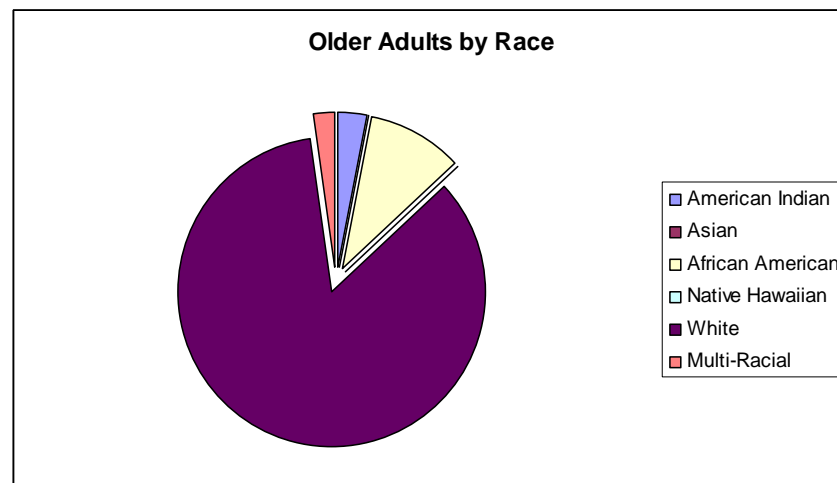
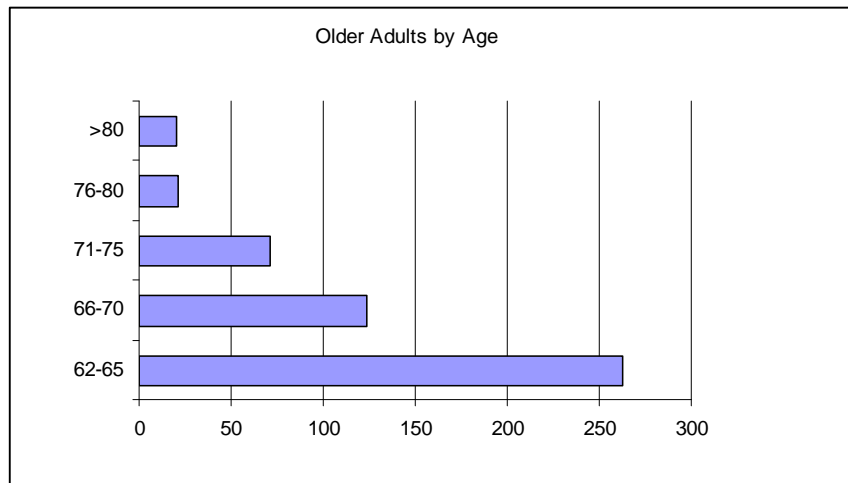
Of all those accessing homeless services, 43% had some amount of cash income, primarily from employment (46%), social security (17%), and disability (15%). Of those with income, 60% received less than \$1,000 per month.

Of those served by homeless programs, 48% of adults received food stamps and 36% reported receiving AHCCCS health insurance. There were only minor variations in the type of housing program in terms of people accessing non-cash benefits.

Special Report - Older Adults

For this Annual Report, a special report was done to further analyze Older Homeless Adults. During the reporting period, 499 older individuals, defined as persons age 62 or older were served. Four out of five older homeless adults were men and the vast majority (94%) were single individuals not in a household. White, Non-Hispanic/Non-Latino persons were the predominant race and ethnicity categories represented.

Almost half of the older adults served are U.S. Military Veterans. Sixty-one percent (61%) of the clients reported a Disability of Long Duration, defined as an ongoing disability that affects their ability to live on their own. Over half of the persons came from Homeless Situations while thirty-five percent (35%) came from other locations including rented apartments, hotels/motels, or staying with family and friends.



Summary of Persons Accessing Services by Program Type

For the Period from July 1, 2011 - June 30, 2012

| | Total Unduplicated | | Emergency Shelters | | Transitional Housing | | Permanent Supportive Housing | | HPRP | | Non-Residential Programs | |
|-------------------------|--------------------|-----|--------------------|-----|----------------------|-----|------------------------------|-----|-------|-----|--------------------------|-----|
| | Count | % | Count | % | Count | % | Count | % | Count | % | Count | % |
| Total Persons | 9917 | | 3895 | | 2769 | | 1009 | | 964 | | 3125 | |
| Adults | 8148 | 82% | 3515 | 90% | 2173 | 78% | 830 | 82% | 536 | 56% | 2945 | 94% |
| Children | 1724 | 17% | 346 | 9% | 593 | 21% | 179 | 18% | 428 | 44% | 177 | 6% |
| Age Unknown | 45 | 0% | 34 | 1% | 3 | 0% | 0 | 0% | 0 | 0% | 3 | 0% |
| Total Households | 8374 | | 3735 | | 2320 | | 827 | | 447 | | 3097 | |

Some persons may be in more than one program type during the year.

One Day Point-in-Time Snapshot on June 30, 2012

| | Total Unduplicated | | Emergency Shelters | | Transitional Housing | | Permanent Supportive Housing | | HPRP | | Non-Residential Programs | |
|-------------------------|--------------------|-----|--------------------|-----|----------------------|-----|------------------------------|-----|------|-----|--------------------------|-----|
| | Count | % | Count | % | Count | % | Count | % | | % | Count | % |
| Total Persons | 4045 | | 560 | | 1095 | | 851 | | 254 | | 1597 | |
| Adults | 3396 | 84% | 487 | 87% | 787 | 72% | 705 | 83% | 151 | 59% | 1556 | 97% |
| Children | 644 | 16% | 73 | 13% | 306 | 28% | 143 | 17% | 103 | 41% | 41 | 3% |
| Age Unknown | 5 | 0% | 0 | 0% | 2 | 0% | 3 | 0% | 0 | 0% | 0 | 0% |
| Total Households | 3533 | | 521 | | 873 | 588 | 717 | | 114 | | 1536 | |

Some persons may be in Residential and Non-Residential Programs on the same date.

Annual Report of Clients Served

For the Period from July 1, 2011 to June 30, 2012

Homelessness in Tucson/Pima County

Demographics: Gender & Age

For the Period from July 1, 2011 - June 30, 2012

Percents calculated from program totals on p. 8.

| CHARACTERISTIC | Total Unduplicated Persons | | Emergency Shelters | | Transitional Housing | | Permanent Supportive Housing | | HPRP | | Non-Residential Programs | |
|-------------------|----------------------------|-----|--------------------|-----|----------------------|-----|------------------------------|-----|-------|-----|--------------------------|-----|
| | Count | % | Count | % | Count | % | Count | % | Count | % | Count | % |
| GENDER | | | | | | | | | | | | |
| Male | 6320 | 64% | 2980 | 77% | 1690 | 61% | 554 | 55% | 420 | 44% | 2231 | 71% |
| Female | 3549 | 36% | 883 | 23% | 1070 | 39% | 455 | 45% | 544 | 56% | 888 | 28% |
| Transgender | 7 | 0% | 2 | 0% | 4 | 0% | 0 | 0% | 0 | 0% | 2 | 0% |
| Unknown/refused | 41 | 0% | 30 | 1% | 5 | 0% | 0 | 0% | 0 | 0% | 4 | 0% |
| AGE | | | | | | | | | | | | |
| 0-5 | 690 | 7% | 155 | 4% | 281 | 10% | 37 | 4% | 150 | 16% | 65 | 2% |
| 6-8 | 340 | 3% | 65 | 2% | 114 | 4% | 46 | 5% | 76 | 8% | 30 | 1% |
| 9-12 | 361 | 4% | 79 | 2% | 104 | 4% | 44 | 4% | 106 | 11% | 40 | 1% |
| 13-15 | 222 | 2% | 29 | 1% | 65 | 2% | 35 | 3% | 60 | 6% | 32 | 1% |
| 16-17 | 111 | 1% | 18 | 0% | 29 | 1% | 17 | 2% | 36 | 4% | 10 | 0% |
| 18-24 | 1011 | 10% | 372 | 10% | 382 | 14% | 56 | 6% | 101 | 10% | 246 | 8% |
| 25-34 | 1654 | 17% | 696 | 18% | 464 | 17% | 130 | 13% | 127 | 13% | 567 | 18% |
| 35-44 | 1703 | 17% | 722 | 19% | 403 | 15% | 186 | 18% | 133 | 14% | 664 | 21% |
| 45-61 | 3281 | 33% | 1483 | 38% | 801 | 29% | 378 | 37% | 161 | 17% | 1325 | 42% |
| 62+ | 499 | 5% | 242 | 6% | 123 | 4% | 80 | 8% | 14 | 1% | 143 | 5% |
| Age Not Specified | 45 | 0% | 34 | 1% | 3 | 0% | 0 | 0% | 0 | 0% | 3 | 0% |

Homelessness in Tucson/Pima County

Demographics: Ethnicity, Race, Veterans, Domestic Violence Victims, and Disability of Long Duration

For the Period from July 1, 2011 - June 30, 2012

Percents calculated from program totals on p.8.

| CHARACTERISTIC | Total Unduplicated Persons | | Emergency Shelters | | Transitional Housing | | Permanent Supportive Housing | | HPRP | | Non-Residential Programs | |
|---|----------------------------|-----|--------------------|-----|----------------------|-----|------------------------------|-----|-------|-----|--------------------------|-----|
| | Count | % | Count | % | Count | % | Count | % | Count | % | Count | % |
| ETHNICITY | | | | | | | | | | | | |
| Hispanic/Latino | 3136 | 32% | 1057 | 27% | 804 | 29% | 282 | 28% | 516 | 54% | 878 | 28% |
| Non-Hispanic/Non-Latino | 6672 | 67% | 2771 | 71% | 1947 | 70% | 722 | 72% | 448 | 46% | 2217 | 71% |
| Unknown/refused | 109 | 1% | 67 | 2% | 18 | 1% | 5 | 0% | 0 | 0% | 30 | 1% |
| RACE | | | | | | | | | | | | |
| American Indian/Alaska Native | 514 | 5% | 178 | 5% | 132 | 5% | 30 | 3% | 31 | 3% | 212 | 7% |
| Asian | 49 | 0% | 20 | 1% | 23 | 1% | 5 | 0% | 3 | 0% | 11 | 0% |
| Black/African-American | 1233 | 12% | 427 | 11% | 409 | 15% | 131 | 13% | 121 | 13% | 421 | 13% |
| Native Hawaiian or Other Pacific Islander | 35 | 0% | 9 | 0% | 10 | 0% | 3 | 0% | 2 | 0% | 18 | 1% |
| White | 7203 | 73% | 2829 | 73% | 1968 | 71% | 782 | 78% | 724 | 75% | 2196 | 70% |
| Other Multi-Racial | 418 | 4% | 171 | 4% | 134 | 5% | 36 | 4% | 29 | 3% | 151 | 5% |
| Don't Know/Refused | 449 | 5% | 210 | 5% | 83 | 3% | 15 | 1% | 54 | 6% | 96 | 3% |
| Not Specified | 16 | 0% | 51 | 1% | 10 | 0% | 7 | 1% | 0 | 0% | 20 | 1% |
| OTHER | | | | | | | | | | | | |
| Veteran | 1368 | 17% | 496 | 14% | 689 | 32% | 97 | 12% | 69 | 13% | 360 | 12% |
| Domestic Violence Victim | 1293 | 13% | 437 | 11% | 503 | 18% | 114 | 11% | 33 | 3% | 335 | 11% |
| Disability of Long Duration | 3807 | 38% | 1321 | 34% | 1311 | 47% | 723 | 72% | 113 | 12% | 1267 | 41% |

Homelessness in Tucson/Pima County

Households

For the Period from July 1, 2011 - June 30, 2012

Percents calculated from total persons in singles or in households. Some clients are shown as Singles and Persons in Households due to multiple program entries.

| CHARACTERISTIC | Total Unduplicated Persons | | Emergency Shelters | | Transitional Housing | | Permanent Supportive Housing | | HPRP | | Non-Residential Programs | |
|---------------------------------------|----------------------------|------------|--------------------|------------|----------------------|------------|------------------------------|------------|------------|------------|--------------------------|------------|
| | Count | % | Count | % | Count | % | Count | % | Count | % | Count | % |
| SINGLES | | | | | | | | | | | | |
| Adult Male | 5457 | 53% | 3460 | 71% | 1099 | 43% | 475 | 42% | 80 | 8% | 2096 | 51% |
| Adult Female | 1713 | 17% | 586 | 12% | 408 | 16% | 241 | 21% | 67 | 7% | 782 | 19% |
| Adult Transgender | 7 | 0% | 2 | 0% | 4 | 0% | 1 | 0% | 0 | 0% | 2 | 0% |
| Unaccompanied Youth Male (under 18) | 4 | 0% | 2 | 0% | 0 | 0% | 3 | 0% | 0 | 0% | 0 | 0% |
| Unaccompanied Youth Female (under 18) | 8 | 0% | 2 | 0% | 2 | 0% | 3 | 0% | 0 | 0% | 2 | 0% |
| Total | 7189 | 70% | 4052 | 83% | 1513 | 59% | 723 | 63% | 147 | 15% | 2882 | 70% |
| PERSONS IN HOUSEHOLDS | | | | | | | | | | | | |
| Adult Male | 475 | 5% | 93 | 2% | 119 | 5% | 96 | 8% | 156 | 15% | 992 | 24% |
| Adult Female | 993 | 10% | 263 | 5% | 335 | 13% | 141 | 12% | 268 | 26% | 102 | 2% |
| Children (<18) Male | 823 | 8% | 255 | 5% | 295 | 12% | 94 | 8% | 206 | 20% | 76 | 2% |
| Children (<18) Female | 831 | 8% | 234 | 5% | 298 | 12% | 87 | 8% | 236 | 23% | 86 | 2% |
| Total | 3122 | 30% | 845 | 17% | 1047 | 41% | 418 | 37% | 866 | 85% | 1256 | 30% |

Homelessness in Tucson/Pima County

Prior Living Situation: Residence Prior to Program Entry

For the Period from July 1, 2011 - June 30, 2012

Percents calculated from program totals on p. 8.

| | Total Unduplicated Persons | | Emergency Shelters | | Transitional Housing | | Permanent Supportive Housing | | HPRP | |
|---|----------------------------|-------------|--------------------|-------------|----------------------|-------------|------------------------------|-------------|------------|-------------|
| | Count | % | Count | % | Count | % | Count | % | Count | % |
| RESIDENCE PRIOR TO PROGRAM ENTRY | | | | | | | | | | |
| HOMELESS SITUATIONS | | | | | | | | | | |
| Emergency shelter, including hotel/motel vouchers | 1950 | 20% | 1193 | 31% | 495 | 18% | 272 | 27% | 33 | 3% |
| Transitional housing for homeless persons | 723 | 7% | 116 | 3% | 503 | 18% | 118 | 12% | 42 | 4% |
| Safe Haven | 35 | 0% | 25 | 1% | 12 | 0% | 1 | 0% | 0 | 0% |
| Place not meant for human habitation (e.g. streets) | 1516 | 15% | 749 | 19% | 136 | 5% | 227 | 22% | 40 | 4% |
| <i>Subtotal</i> | 4224 | 43% | 2083 | 53% | 1146 | 41% | 618 | 61% | 115 | 12% |
| INSTITUTIONAL SETTINGS | | | | | | | | | | |
| Psychiatric hospital/facility | 63 | 1% | 44 | 1% | 20 | 1% | 3 | 0% | 0 | 0% |
| Substance abuse treatment facility | 249 | 3% | 49 | 1% | 116 | 4% | 60 | 6% | 3 | 0% |
| Hospital (non-psychiatric) | 181 | 2% | 120 | 3% | 53 | 2% | 8 | 1% | 3 | 0% |
| Jail, prison or juvenile detention facility | 348 | 4% | 113 | 3% | 219 | 8% | 3 | 0% | 0 | 0% |
| Foster care home or foster care group home | 42 | 0% | 3 | 0% | 21 | 1% | 17 | 2% | 3 | 0% |
| <i>Subtotal</i> | 883 | 9% | 329 | 8% | 429 | 15% | 91 | 9% | 9 | 1% |
| OTHER LOCATIONS | | | | | | | | | | |
| Permanent supportive housing | 62 | 1% | 13 | 0% | 2 | 0% | 38 | 4% | 1 | 0% |
| Apartment or house owned | 110 | 1% | 33 | 1% | 24 | 1% | 9 | 1% | 14 | 1% |
| Room/apartment/house rented | 1649 | 17% | 246 | 6% | 322 | 12% | 103 | 10% | 670 | 70% |
| Hotel or motel (no voucher) | 331 | 3% | 198 | 5% | 65 | 2% | 5 | 0% | 11 | 1% |
| Staying with family | 1281 | 13% | 401 | 10% | 492 | 18% | 81 | 8% | 107 | 11% |
| Staying with friends | 834 | 8% | 381 | 10% | 226 | 8% | 38 | 4% | 33 | 3% |
| Other living arrangement | 211 | 2% | 138 | 4% | 44 | 2% | 16 | 2% | 3 | 0% |
| Unknown/refused | 332 | 3% | 73 | 2% | 19 | 1% | 10 | 1% | 1 | 0% |
| <i>Subtotal</i> | 4810 | 49% | 1483 | 38% | 1194 | 43% | 300 | 30% | 840 | 87% |
| Total | 9917 | 100% | 3895 | 100% | 2769 | 100% | 1009 | 100% | 964 | 100% |

Homelessness in Tucson/Pima County

Prior Living Situation: Stability of Prior Residence & Zip Code of Last Permanent Housing

For the Period from July 1, 2011 - June 30, 2012

Percents calculated from program totals on p. 8. Some clients may be shown in multiple zip codes due to multiple program entries.

| | Total Unduplicated Persons | | Emergency Shelters | | Transitional Housing | | Permanent Supportive Housing | | HPRP | |
|--|----------------------------|-----|--------------------|-----|----------------------|-----|------------------------------|-----|-------|-----|
| | Count | % | Count | % | Count | % | Count | % | Count | % |
| <u>STABILITY OF PRIOR RESIDENCE</u> | | | | | | | | | | |
| Less than 1 week | 2261 | 23% | 1360 | 35% | 444 | 16% | 250 | 25% | 30 | 3% |
| > 1 week, < 1 month | 1535 | 15% | 830 | 21% | 433 | 16% | 111 | 11% | 78 | 8% |
| 1 - 3 months | 1891 | 19% | 637 | 16% | 766 | 28% | 190 | 19% | 176 | 18% |
| 3 - 12 months | 1735 | 17% | 416 | 11% | 538 | 19% | 229 | 23% | 375 | 39% |
| 1 year or longer | 1875 | 19% | 453 | 12% | 469 | 17% | 217 | 22% | 293 | 30% |
| Unknown/refused | 620 | 6% | 246 | 6% | 138 | 5% | 21 | 2% | 13 | 1% |
| <u>ZIP CODE OF LAST PERMANENT HOUSING</u> | | | | | | | | | | |
| Tucson | 6221 | 65% | 3395 | 64% | 1569 | 62% | 820 | 81% | 636 | 65% |
| Other Pima County | 1809 | 19% | 808 | 15% | 569 | 22% | 153 | 15% | 329 | 34% |
| Arizona, excluding Tucson/Pima County | 835 | 9% | 519 | 10% | 315 | 12% | 15 | 1% | 12 | 1% |
| Outside of Arizona | 708 | 7% | 607 | 11% | 100 | 4% | 19 | 2% | 4 | 0% |

Homelessness in Tucson/Pima County

Exit Destinations

For the Period from July 1, 2011 - June 30, 2012

Percentages are based on data from persons exiting who answered this question.

| DESTINATION | Total Unduplicated Persons | | Emergency Shelters | | Transitional Housing | | Permanent Supportive Housing | | HPRP | |
|---|----------------------------|------|--------------------|------|----------------------|------|------------------------------|------|-------|------|
| | Count | % | Count | % | Count | % | Count | % | Count | % |
| PERMANENT DESTINATIONS | | | | | | | | | | |
| Apartment or house owned, no subsidy | 86 | 1% | 15 | 0% | 31 | 2% | 10 | 3% | 15 | 2% |
| Apartment or house owned, subsidized | 6 | 0% | 2 | 0% | 4 | 0% | 0 | 0% | 0 | 0% |
| Room, apartment, or house rented, no subsidy | 2145 | 26% | 402 | 10% | 662 | 37% | 67 | 22% | 810 | 84% |
| Room, apartment, or house rented, subsidized | 568 | 7% | 208 | 5% | 190 | 11% | 34 | 11% | 107 | 11% |
| Permanent supportive housing | 66 | 1% | 22 | 1% | 13 | 1% | 20 | 7% | 0 | 0% |
| Staying or living with family, permanent tenure | 573 | 7% | 27 | 1% | 274 | 15% | 34 | 11% | 18 | 2% |
| Staying or living with friend, permanent tenure | 190 | 2% | 61 | 2% | 91 | 5% | 11 | 4% | 2 | 0% |
| <i>Subtotal</i> | 3634 | 44% | 737 | 19% | 1265 | 70% | 176 | 58% | 952 | 99% |
| TEMPORARY DESTINATIONS | | | | | | | | | | |
| Emergency shelter | 1165 | 14% | 825 | 21% | 63 | 3% | 1 | 0% | 2 | 0% |
| Transitional housing | 515 | 6% | 196 | 5% | 238 | 13% | 22 | 7% | 0 | 0% |
| Staying or living with family, temporary tenure | 305 | 4% | 136 | 4% | 77 | 4% | 31 | 10% | 6 | 1% |
| Staying or living with friend, temporary tenure | 240 | 3% | 72 | 2% | 50 | 3% | 20 | 7% | 2 | 0% |
| Hotel or motel paid for without voucher | 96 | 1% | 58 | 1% | 8 | 0% | 1 | 0% | 0 | 0% |
| Place not meant for human habitation | 1694 | 21% | 1451 | 37% | 3 | 0% | 1 | 0% | 1 | 0% |
| Safe Haven | 25 | 0% | 21 | 1% | 0 | 0% | 0 | 0% | 0 | 0% |
| <i>Subtotal</i> | 4040 | 49% | 2759 | 71% | 439 | 24% | 76 | 25% | 11 | 1% |
| INSTITUTIONAL DESTINATIONS | | | | | | | | | | |
| Psychiatric hospital/facility | 40 | 0% | 26 | 1% | 12 | 1% | 1 | 0% | 0 | 0% |
| Substance abuse treatment facility | 66 | 1% | 30 | 1% | 21 | 1% | 10 | 3% | 0 | 0% |
| Hospital (non-psychiatric) | 54 | 1% | 25 | 1% | 25 | 1% | 2 | 1% | 0 | 0% |
| Jail, prison or juvenile detention facility | 58 | 1% | 13 | 0% | 29 | 2% | 13 | 4% | 1 | 0% |
| Foster care home or foster care group home | 7 | 0% | 5 | 0% | 0 | 0% | 2 | 1% | 0 | 0% |
| <i>Subtotal</i> | 225 | 3% | 99 | 3% | 87 | 5% | 28 | 9% | 1 | 0% |
| OTHER | | | | | | | | | | |
| Deceased | 23 | 0% | 4 | 0% | 4 | 0% | 15 | 5% | 1 | 0% |
| Left with unknown destination | 302 | 4% | 281 | 7% | 8 | 0% | 9 | 3% | 1 | 0% |
| <i>Subtotal</i> | 325 | 4% | 285 | 7% | 12 | 1% | 24 | 8% | 2 | 0% |
| Total <i>(Some clients may have exited more than one program.)</i> | 8224 | 100% | 3880 | 100% | 1803 | 100% | 304 | 100% | 966 | 100% |

Homelessness in Tucson/Pima County

Further Characteristics: Disabilities, Employment, & Education

For the Period from July 1, 2011 - June 30, 2012

For Adults only. Percentages of Disabilities, Employment at Entry, and Education are percentages of total responses within each characteristic.

| CHARACTERISTIC | Total Unduplicated Persons | | Emergency Shelters | | Transitional Housing | | Permanent Supportive Housing | |
|--|----------------------------|------|--------------------|------|----------------------|------|------------------------------|------|
| | Count | % | Count | % | Count | % | Count | % |
| DISABILITIES | | | 0 | | | | | |
| Has disability of long duration | 3836 | 47% | 1582 | 45% | 1125 | 52% | 838 | 101% |
| <i>Types of Disabilities (may have more than one):</i> | | | | | | | | |
| Alcohol Abuse | 1844 | 48% | 804 | 51% | 892 | 79% | 220 | 26% |
| Drug Abuse | 1690 | 44% | 658 | 42% | 878 | 78% | 230 | 27% |
| Mental Illness | 2536 | 66% | 1158 | 73% | 557 | 50% | 524 | 63% |
| Chronic Health Condition or Medical Disability | 1276 | 33% | 733 | 46% | 326 | 29% | 140 | 17% |
| Developmental Disability | 269 | 7% | 151 | 10% | 66 | 6% | 22 | 3% |
| Physical Disability | 1098 | 29% | 718 | 45% | 266 | 24% | 92 | 11% |
| HIV/AIDS | 229 | 6% | 30 | 2% | 11 | 1% | 194 | 23% |
| Hearing or Vision Impairment | 348 | 9% | 203 | 13% | 47 | 4% | 22 | 3% |
| Other | 50 | 1% | 23 | 1% | 11 | 1% | 6 | 1% |
| | | | | | | | | |
| EMPLOYMENT AT ENTRY | | | | | | | | |
| Employed and not looking | 573 | 9% | 227 | 8% | 267 | 14% | 69 | 8% |
| Employed and looking | 455 | 8% | 157 | 6% | 226 | 12% | 77 | 9% |
| Unemployed but looking for work | 3338 | 55% | 1649 | 58% | 1003 | 54% | 306 | 34% |
| Unemployed and not looking | 1685 | 28% | 804 | 28% | 358 | 19% | 439 | 49% |
| Total Responses | 6051 | 100% | 2837 | 100% | 1854 | 100% | 891 | 100% |
| | | | | | | | | |
| EDUCATION | | | | | | | | |
| No Schooling | 25 | 0% | 13 | 0% | 1 | 0% | 7 | 1% |
| Some Elementary School | 310 | 5% | 164 | 5% | 54 | 3% | 39 | 5% |
| Some High School | 1512 | 23% | 774 | 23% | 383 | 21% | 136 | 16% |
| HS Diploma | 2194 | 33% | 1109 | 33% | 699 | 38% | 318 | 37% |
| GED | 1262 | 19% | 629 | 18% | 379 | 20% | 152 | 18% |
| Post-Secondary School | 1412 | 21% | 713 | 21% | 337 | 18% | 212 | 25% |
| Total Responses | 6715 | 100% | 3402 | 100% | 1853 | 100% | 864 | 100% |

Homelessness in Tucson/Pima County

Income and Benefits : Amounts & Sources of Income at Entry

For the Period from July 1, 2011 - June 30, 2012

Percentages for Cash Income Level are based on total adults. Percentages for Income Source are based on clients reporting income.

| | Total Unduplicated Persons | | Emergency Shelters | | Transitional Housing | | Permanent Supportive Housing | | HPRP | |
|--|----------------------------|-----|--------------------|-----|----------------------|-----|------------------------------|-----|-------|-----|
| | Count | % | Count | % | Count | % | Count | % | Count | % |
| MONTHLY SOURCE OF INCOME | | | | | | | | | | |
| CASH INCOME LEVEL (for clients with income) | | | | | | | | | | |
| 1 - 99 | 58 | 1% | 26 | 1% | 12 | 1% | 10 | 1% | 7 | 1% |
| 100 - 249 | 236 | 3% | 99 | 3% | 64 | 3% | 35 | 4% | 14 | 3% |
| 250 - 499 | 323 | 4% | 100 | 3% | 102 | 5% | 62 | 7% | 36 | 7% |
| 500 - 749 | 852 | 10% | 300 | 9% | 190 | 9% | 221 | 27% | 64 | 12% |
| 750 - 999 | 563 | 7% | 176 | 5% | 208 | 10% | 6 | 1% | 62 | 12% |
| 1000 - 1499 | 880 | 11% | 292 | 8% | 393 | 18% | 67 | 8% | 93 | 17% |
| 1500 - 1999 | 320 | 4% | 101 | 3% | 159 | 7% | 19 | 2% | 44 | 8% |
| 2000+ | 239 | 3% | 78 | 2% | 143 | 7% | 8 | 1% | 19 | 4% |
| | | | | | | | | | | |
| INCOME SOURCE | | | | | | | | | | |
| Earned Income | 1888 | 46% | 605 | 44% | 870 | 58% | 141 | 25% | 234 | 56% |
| Unemployment | 314 | 8% | 112 | 8% | 87 | 6% | 24 | 4% | 81 | 20% |
| SSI | 712 | 17% | 260 | 19% | 155 | 10% | 202 | 35% | 23 | 6% |
| SSDI | 616 | 15% | 223 | 16% | 151 | 10% | 165 | 29% | 19 | 5% |
| VA Disability | 0 | 0% | 0 | 0% | 0 | 0% | 0 | 0% | 0 | 0% |
| Private Disability | 9 | 0% | 5 | 0% | 4 | 0% | 0 | 0% | 2 | 0% |
| Worker's Compensation | 10 | 0% | 3 | 0% | 4 | 0% | 0 | 0% | 1 | 0% |
| TANF | 157 | 4% | 75 | 5% | 37 | 2% | 17 | 3% | 3 | 1% |
| Social Security Retirement | 85 | 2% | 43 | 3% | 29 | 2% | 7 | 1% | 7 | 2% |
| Veteran's Pension | 148 | 4% | 45 | 3% | 109 | 7% | 5 | 1% | 7 | 2% |
| Child Support | 136 | 3% | 16 | 1% | 55 | 4% | 10 | 2% | 37 | 9% |
| Alimony/Spousal Support | 14 | 0% | 3 | 0% | 9 | 1% | 1 | 0% | 1 | 0% |

Homelessness in Tucson/Pima County

Income and Benefits : Sources of Non-Cash Benefits at Entry

For the Period from July 1, 2011 - June 30, 2012

Percentages are based on total responses

| SOURCE OF NON-CASH BENEFITS | Total Unduplicated Persons | | Emergency Shelters | | Transitional Housing | | Permanent Supportive Housing | | HPRP | |
|---|----------------------------|-------------|--------------------|-------------|----------------------|-------------|------------------------------|-------------|------------|-------------|
| | Count | % | Count | % | Count | % | Count | % | | % |
| Food Stamps/SNAP | 4136 | 48% | 1563 | 47% | 1400 | 49% | 434 | 42% | 473 | 49% |
| Medicare | 293 | 3% | 164 | 5% | 74 | 3% | 41 | 4% | 7 | 1% |
| AHCCCS | 3139 | 36% | 1207 | 37% | 802 | 28% | 487 | 47% | 417 | 43% |
| WIC | 135 | 2% | 48 | 1% | 56 | 2% | 3 | 0% | 15 | 2% |
| VA Medical | 588 | 7% | 177 | 5% | 375 | 13% | 45 | 4% | 45 | 5% |
| TANF Child Care | 52 | 1% | 11 | 0% | 33 | 1% | 0 | 0% | 1 | 0% |
| TANF Transportation | 0 | 0% | 0 | 0% | 0 | 0% | 0 | 0% | 0 | 0% |
| Other TANF-Funded Services | 8 | 0% | 2 | 0% | 1 | 0% | 6 | 1% | 0 | 0% |
| Section 8, Public Housing, or Other Rental Assistance | 18 | 0% | 5 | 0% | 5 | 0% | 1 | 0% | 1 | 0% |
| Other | 248 | 3% | 115 | 3% | 86 | 3% | 14 | 1% | 11 | 1% |
| Total Responses | 8617 | 100% | 3292 | 100% | 2832 | 100% | 1031 | 100% | 970 | 100% |

Special Report : Older Homeless Adults

For the Period from July 1, 2011 - June 30, 2012

Percentages are based on the total responses in each category.

| GENDER | | |
|---|-----|-----|
| Male | 399 | 80% |
| Female | 99 | 20% |
| Transgender | 1 | 0% |
| ETHNICITY | | |
| Hispanic/Latino | 103 | 21% |
| Non-Hispanic/Non-Latino | 397 | 79% |
| RACE | | |
| American Indian or Alaska Native | 14 | 3% |
| Asian | 1 | 0% |
| Black or African American | 47 | 10% |
| Native Hawaiian or Other Pacific Islander | 0 | 0% |
| White | 398 | 85% |
| Multi-Racial | 10 | 2% |
| AGE | | |
| 62 - 65 | 263 | 53% |
| 66 - 70 | 124 | 25% |
| 71 - 75 | 71 | 14% |
| 76 - 80 | 21 | 4% |
| > 80 | 20 | 4% |
| VETERANS | | |
| U.S. Military Veteran | 226 | 45% |
| Not a Veteran | 273 | 55% |
| DISABILITY OF LONG DURATION | | |
| Has a Disability of Long Duration | 303 | 61% |
| Does Not Have a Disability of Long Duration | 196 | 39% |

| HOUSEHOLD | | |
|---|------------|-------------|
| Single Individual | 469 | 94% |
| In a Household | 30 | 6% |
| RESIDENCE PRIOR TO ENTRY | | |
| Homeless Situations | | |
| Emergency shelter, including hotel/motel vouchers | 127 | 25% |
| Transitional housing for homeless persons | 48 | 10% |
| Safe Haven | 1 | 0% |
| Place not meant for human habitation (e.g. streets) | 106 | 21% |
| <i>Subtotal</i> | 282 | 57% |
| Institutional Settings | | |
| Psychiatric hospital/facility | 4 | 1% |
| Substance abuse treatment facility | 8 | 2% |
| Hospital (non-psychiatric) | 25 | 5% |
| Jail, prison or juvenile detention facility | 4 | 1% |
| Foster care home or foster care group home | 0 | 0% |
| <i>Subtotal</i> | 41 | 8% |
| Other Locations | | |
| Permanent supportive housing | 2 | 0% |
| Apartment or house owned | 11 | 2% |
| Room/apartment/house rented | 54 | 11% |
| Hotel or motel (no voucher) | 30 | 6% |
| Staying with family | 21 | 4% |
| Staying with friends | 26 | 5% |
| Other living arrangement | 21 | 4% |
| Unknown/refused | 11 | 2% |
| <i>Subtotal</i> | 176 | 35% |
| Total | 499 | 100% |

Point-in-Time Reports

One Day Snapshot
on June 30, 2012

Homelessness in Tucson/Pima County

Demographics: Gender & Age

Point-in-Time on June 30, 2012

| CHARACTERISTIC | Total Unduplicated Persons | | Emergency Shelters | | Transitional Housing | | Permanent Supportive Housing | | HPRP | | Non-Residential Programs | |
|-------------------|----------------------------|-----|--------------------|-----|----------------------|-----|------------------------------|-----|-------|-----|--------------------------|-----|
| | Count | % | Count | % | Count | % | Count | % | Count | % | Count | % |
| GENDER | | | | | | | | | | | | |
| Male | 2508 | 62% | 399 | 71% | 613 | 56% | 481 | 57% | 99 | 39% | 1168 | 73% |
| Female | 1524 | 38% | 161 | 29% | 475 | 43% | 366 | 43% | 155 | 61% | 426 | 27% |
| Transgender | 5 | 0% | 0 | 0% | 3 | 0% | 1 | 0% | 0 | 0% | 2 | 0% |
| Unknown/refused | 8 | 0% | 0 | 0% | 4 | 0% | 3 | 0% | 0 | 0% | 1 | 0% |
| AGE | | | | | | | | | | | | |
| 0-5 | 250 | 6% | 42 | 8% | 137 | 13% | 34 | 4% | 31 | 12% | 15 | 1% |
| 6-8 | 141 | 3% | 16 | 3% | 65 | 6% | 38 | 4% | 17 | 7% | 11 | 1% |
| 9-12 | 131 | 3% | 10 | 2% | 59 | 5% | 32 | 4% | 27 | 11% | 5 | 0% |
| 13-15 | 83 | 2% | 4 | 1% | 33 | 3% | 27 | 3% | 14 | 6% | 8 | 1% |
| 16-17 | 36 | 1% | 1 | 0% | 12 | 1% | 12 | 1% | 13 | 5% | 2 | 0% |
| 18-24 | 393 | 10% | 43 | 8% | 179 | 16% | 54 | 6% | 33 | 13% | 121 | 8% |
| 25-34 | 617 | 15% | 107 | 19% | 167 | 15% | 90 | 11% | 27 | 11% | 282 | 18% |
| 35-44 | 706 | 17% | 105 | 19% | 131 | 12% | 151 | 18% | 39 | 15% | 344 | 22% |
| 45-61 | 1491 | 37% | 210 | 38% | 276 | 25% | 341 | 40% | 49 | 19% | 737 | 46% |
| 62+ | 192 | 5% | 22 | 4% | 34 | 3% | 69 | 8% | 4 | 2% | 72 | 5% |
| Age Not Specified | 5 | 0% | 0 | 0% | 2 | 0% | 3 | 0% | 0 | 0% | 0 | 0% |

Homelessness in Tucson/Pima County

Demographics: Ethnicity, Race, Veterans, Domestic Violence Victims, and Disability of Long Duration

Point-in-Time on June 30, 2012

| CHARACTERISTIC | Total Unduplicated Clients | | Emergency Services | | Transitional Housing | | Permanent Housing | | HPRP | | Non-Residential Services | |
|---|----------------------------|-----|--------------------|-----|----------------------|-----|-------------------|-----|-------|-----|--------------------------|-----|
| | Count | % | Count | % | Count | % | Count | % | Count | % | Count | % |
| ETHNICITY | | | | | | | | | | | | |
| Hispanic/Latino | 1151 | 28% | 150 | 27% | 346 | 32% | 226 | 27% | 150 | 59% | 341 | 21% |
| Non-Hispanic/Non-Latino | 2859 | 71% | 410 | 73% | 746 | 68% | 612 | 72% | 102 | 40% | 1239 | 78% |
| Unknown/refused | 35 | 1% | 0 | 0% | 3 | 0% | 13 | 2% | 2 | 1% | 17 | 1% |
| RACE | | | | | | | | | | | | |
| American Indian/Alaska Native | 204 | 5% | 39 | 7% | 61 | 6% | 21 | 2% | 1 | 0% | 103 | 6% |
| Asian | 16 | 0% | 3 | 1% | 6 | 1% | 4 | 0% | 0 | 0% | 5 | 0% |
| Black/African-American | 589 | 15% | 57 | 10% | 196 | 18% | 90 | 11% | 43 | 17% | 258 | 16% |
| Native Hawaiian or Other Pacific Islander | 16 | 0% | 1 | 0% | 3 | 0% | 1 | 0% | 0 | 0% | 11 | 1% |
| White | 2898 | 72% | 405 | 72% | 734 | 67% | 691 | 81% | 187 | 74% | 1087 | 68% |
| Other Multi-Racial | 170 | 4% | 23 | 4% | 60 | 5% | 23 | 3% | 5 | 2% | 80 | 5% |
| Don't Know/Refused | 122 | 3% | 30 | 5% | 30 | 3% | 12 | 1% | 18 | 7% | 24 | 2% |
| Not Specified | 30 | 1% | 3 | 1% | 5 | 0% | 9 | 1% | 0 | 0% | 29 | 2% |
| OTHER | | | | | | | | | | | | |
| Veteran | 486 | 14% | 60 | 12% | 203 | 26% | 97 | 14% | 5 | 3% | 169 | 11% |
| Domestic Violence Victim | 559 | 14% | 103 | 18% | 216 | 20% | 102 | 12% | 12 | 5% | 157 | 10% |
| Disability of Long Duration | 1782 | 44% | 189 | 34% | 394 | 36% | 635 | 75% | 31 | 12% | 690 | 43% |

Homelessness in Tucson/Pima County

Households

Point-in-Time on June 30, 2012

Percents calculated from total persons in singles or in households. Some clients are shown as Singles and Persons in Households due to multiple program entries.

| CHARACTERISTIC | Total Unduplicated Persons | | Emergency Shelters | | Transitional Housing | | Permanent Supportive Housing | | HPRP | | Non-Residential Programs | |
|------------------------------|----------------------------|------------|--------------------|------------|----------------------|------------|------------------------------|------------|------------|------------|--------------------------|------------|
| | Count | % | Count | % | Count | % | Count | % | Count | % | Count | % |
| SINGLES | | | | | | | | | | | | |
| Adult Males | 2232 | 53% | 430 | 77% | 359 | 34% | 322 | 43% | 18 | 7% | 1135 | 59% |
| Adult Females | 795 | 19% | 103 | 18% | 159 | 15% | 182 | 25% | 22 | 8% | 396 | 21% |
| Adult Transgender | 5 | 0% | 0 | 0% | 3 | 0% | 1 | 0% | 0 | 0% | 2 | 0% |
| Unaccompanied Youth Males | 4 | 0% | 1 | 0% | 0 | 0% | 3 | 0% | 0 | 0% | 0 | 0% |
| Unaccompanied Youth Females | 6 | 0% | 0 | 0% | 2 | 0% | 3 | 0% | 0 | 0% | 1 | 0% |
| Total | 3042 | 72% | 534 | 95% | 523 | 50% | 511 | 69% | 40 | 15% | 1534 | 80% |
| PERSONS IN HOUSEHOLDS | | | | | | | | | | | | |
| Adult Male | 188 | 4% | 8 | 1% | 52 | 5% | 76 | 10% | 50 | 18% | 325 | 17% |
| Adult Female | 394 | 9% | 19 | 3% | 166 | 16% | 11 | 1% | 78 | 28% | 21 | 1% |
| Children (<18) Males | 301 | 7% | 0 | 0% | 154 | 15% | 74 | 10% | 42 | 15% | 23 | 1% |
| Children (<18) Females | 312 | 7% | 29 | 5% | 152 | 15% | 69 | 9% | 64 | 23% | 14 | 1% |
| Total | 1195 | 28% | 26 | 10% | 524 | 50% | 230 | 31% | 234 | 85% | 383 | 20% |

Glossary

AHCCCS - Arizona Health Care Cost Containment System: Arizona's Medicaid Agency and State Children's Health Insurance Program (KidsCare). AHCCCS is responsible for providing federal and state funded health insurance to qualifying Arizonans.

Adults - Anyone who is 18 years old or older.

Children - Anyone 17 years old or younger.

Chronically Homeless - a chronically homeless person is either (1) an unaccompanied homeless individual with a disabling condition who has been continuously homeless for a year or more, OR (2) an unaccompanied individual with a disabling condition who has had at least four episodes of homelessness in the past three years.

Disability of Long Duration - A disabling condition in reference to chronic homelessness is defined by HUD as a diagnosable substance use disorder, serious mental illness, developmental disability, or chronic physical illness or disability, including the co-occurrence of two or more of these conditions. A disabling condition of long duration limits an individual's ability to work or perform one or more activities of daily living.

Domestic Violence (DV) - Occurs when a family member, partner or ex-partner attempts to physically or psychologically dominate another. Domestic violence can include physical violence, sexual abuse, emotional abuse, intimidation, economic deprivation, and threats of violence.

Emergency Shelter - Any facility whose primary purpose is to provide temporary shelter for those who are experiencing homelessness in general or for specific populations of homeless people. This can also include emergency motel/hotel voucher assistance.

HMIS (Homeless Management Information System) - Computerized data collection tool designed to capture client-level information over time on the characteristics and service needs of men, women, and children experiencing homelessness.

Household - One or more individuals who live together. Households with children are defined as one adult and one child, or households with an unaccompanied youth only, or households with multiple children only (e.g., juvenile parent and child).

HPRP (Homelessness Prevention and Rapid Re-Housing Program)- This program was established under TitleXII of Division A of the American Recovery and Reinvestment Act of 2009, ("Recovery Act"). The purpose of the HPRP is to provide homelessness prevention assistance to households who would otherwise become homeless. In addition, HPRP is designed to provide assistance to rapidly re-house persons who are homeless. Program period was October, 2009, through June, 2012.

Medicaid - A program in the United States, jointly funded by the states and the federal government, that reimburses hospitals and physicians for providing care to qualifying people who cannot finance their own medical expenses. See also AHCCCS.

Medicare - A program under the U.S. Social Security Administration that reimburses hospitals and physicians for medical care provided to qualifying people over 65 years old.

Non-Residential Services - Represents any programming and supportive services offered to homeless participants that does not consist of housing or shelter. Examples of Non-Residential Services can include, but is not limited to, outreach, day or drop-in centers, food assistance, and employment programs.

Permanent Supportive Housing - Long-term, community-based housing that has supportive services for homeless persons with disabilities. This type of supportive housing enables the special needs populations to live independently as possible in a permanent setting. Permanent housing can be provided in one structure or in several structures at one site or in multiple structures at scattered sites.

Point in Time (PIT) - A snapshot of the homeless population taken on a given day. Since 2005, HUD requires all Continuum of Care applicants to complete this count every other year in the last week of January. This count includes a street count in addition to a count of all clients in emergency and transitional beds. However, a Point in Time as referred to in this document represents only those participants who were accessing and enrolled in services on a designated day (i.e. June 30^h) as reported in HMIS.

Safe Haven - A form of supportive housing that serves hard-to-reach homeless persons with severe mental illness who are on the streets and have been unable or unwilling to participate in supportive services.

SCHIP (State Children's Health Insurance Program) - A program administered by the United States Department of Health and Human Services that provides matching funds to states for health insurance to families with children. The program was designed with the intent to cover uninsured children in families with incomes that are modest but too high to qualify for Medicaid.

Section 8 - Private rental units that qualify for federal subsidies on behalf of low-income tenants who pay a limited portion of their income for rent.

SNAP - Special Needs Assistance Program. *Formerly food stamps.*

SSI (Supplemental Security Income) - A monthly stipend provided to aged (legally deemed to be 65 or older), blind, or disabled persons based on need, paid by the U.S. Government.

SSDI (Social Security Disability Insurance) - A wage replacement income for individuals who have worked and paid FICA taxes and who now have a disability meeting Social Security disability rules.

TANF (Temporary Assistance for Needy Families) - Provides cash assistance to indigent American families with dependent children through the United States Department of Health and Human Services. *Formerly Welfare.*

Transitional Housing - A project that has its purpose facilitating the movement of homeless individuals and families to permanent housing within a reasonable amount of time (usually 24 months).

Transgender - An umbrella term used to describe the non-identification with, or non-presentation as, the sex (and assumed gender) one was assigned at birth.

Unaccompanied Youth - Minors or young adults (generally under age 22) who are not in the physical custody of a parent or guardian, including those living in inadequate housing such as shelters, cars, or on the streets. Also includes those who have been denied housing by their families and school-age unwed mothers who have no housing of their own.

Unduplicated (Count) -An unduplicated count ensures that individuals are counted only once regardless of the number of times they entered or exited the homeless system or the number of programs in which they participated.

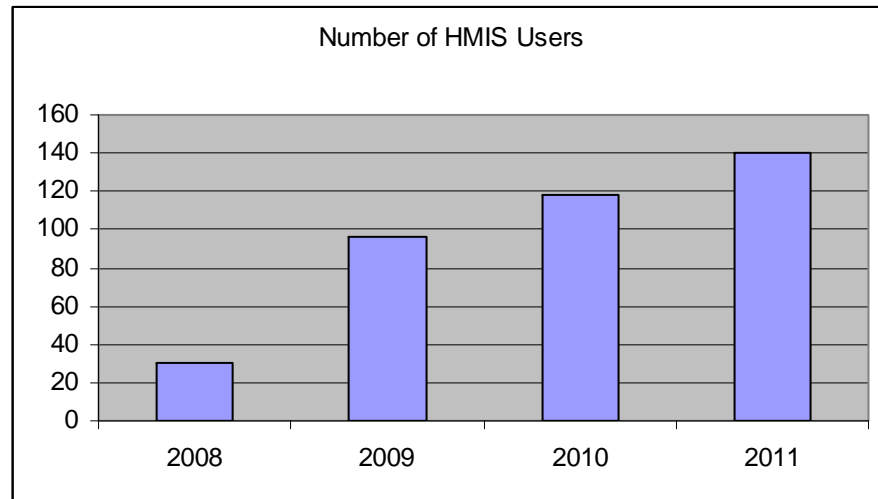
VA (Veterans Affairs) - A government-run military veteran benefit system. It is responsible for administering programs of veterans' benefits for veterans, their families, and survivors. The benefits provided include disability compensation, pension, education, home loans, life insurance, vocational rehabilitation, survivors' benefits, medical benefits, and burial benefits.

WIC- Women Infants and Children- Provides Federal grants to States for supplemental foods, health care referrals, and nutrition education for low-income pregnant, breastfeeding, and non-breastfeeding postpartum women, and to infants and children up to age five who are found to be at nutritional risk.

Zip Code of Last Permanent Housing - The U.S. Postal Service zip code area of the last stable residence a participant has lived for 90 days or more.

Agencies Providing Data

- Arizona Housing and Prevention Services
- City of Tucson, Housing and Community Development Department
- CODAC Behavioral Health Services
- Comin' Home
- Compass Health Care
- COPE Community Services, Inc.
- Community Partnership of Southern Arizona (CPSA)
- Esperanza En Escalante
- Gospel Rescue Mission
- La Frontera Center
- La Paloma Family Services, Inc.
- New Beginnings for Women and Children
- Old Pueblo Community Services
- Open Inn
- Our Family Services
- Pima County, Department of Community Development and Neighborhood Conservation
- Pio Decimo Center
- Primavera Foundation
- The Salvation Army
- Southern Arizona AIDS Foundation
- Sullivan-Jackson Employment Center
- TMM Family Services



For More Information

Lead HMIS Agency

Margaret Kish
Pima County
Community Development & Neighborhood
Conservation
(520) 243-6745
margaret.kish@pima.gov

Pamela Moseley
Pima County
Community Development & Neighborhood
Conservation
(520) 243-6750
pamela.moseley@pima.gov

TPCH

David Roun
CODAC
(520)327-4505
droun@codac.org

Nick Jones
Old Pueblo Community Services
(520) 546-0122
nickjones@helptucson.org

HMIS Committee

Pamela Moseley
Pima County
(520) 243-6750
pamela.moseley@pima.gov

Celeste Reynolds
CODAC
(520) 409-8811
creynolds@codac.org

HMIS System Administrator

Don Logue
HMIS Project Manager
Symmetric Solutions, Inc.
(480) 203-8861
dlogue@symmetricsolutions.com

Resources

Tucson Pima Collaboration to End Homelessness (TPCH) www.tpch.org
HUD Homeless Resource Exchange www.hudhre.info
HUD Annual Homeless Assessment Report/ HUD Homeless Data Exchange www.hudhdx.info